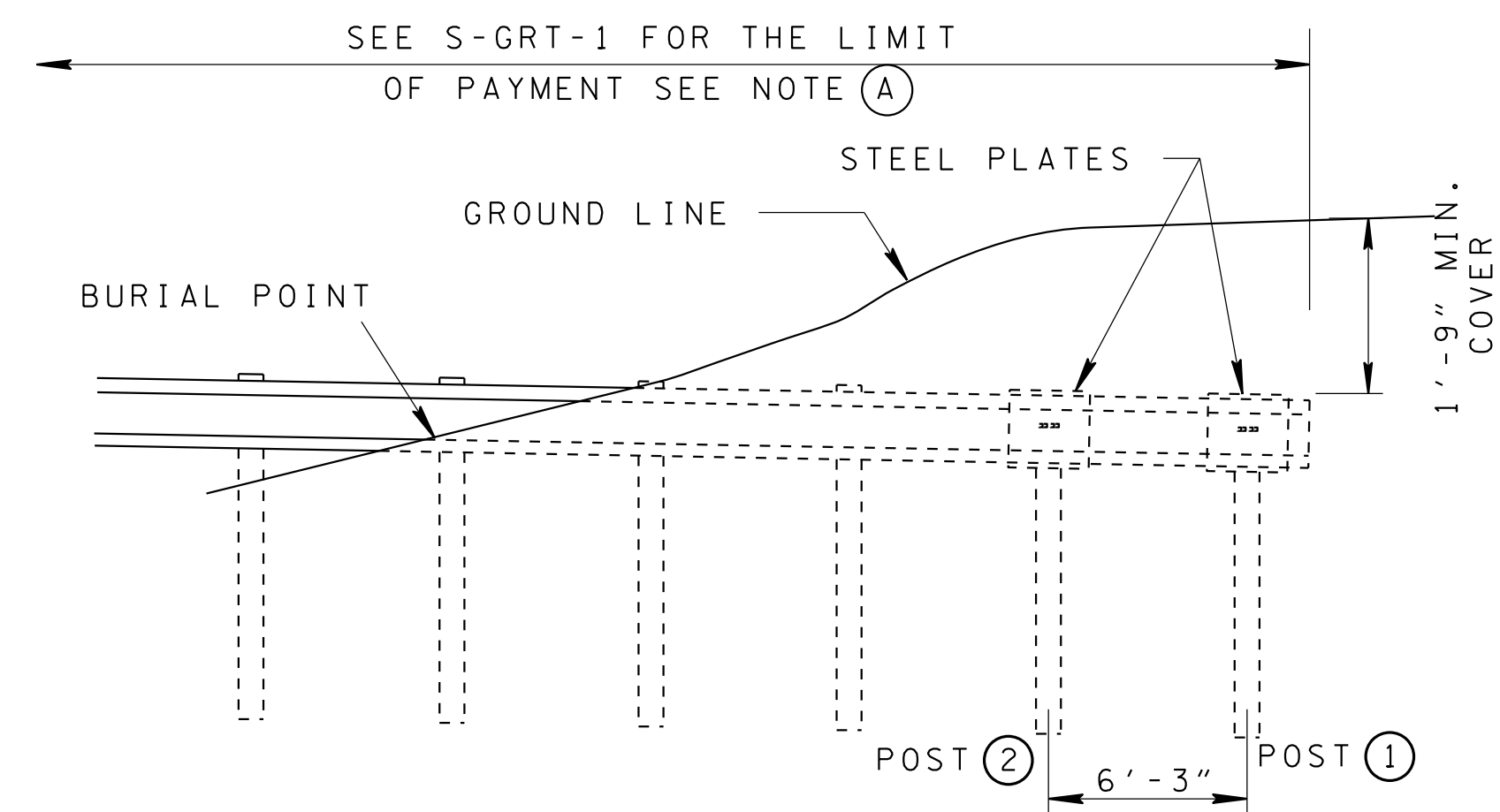
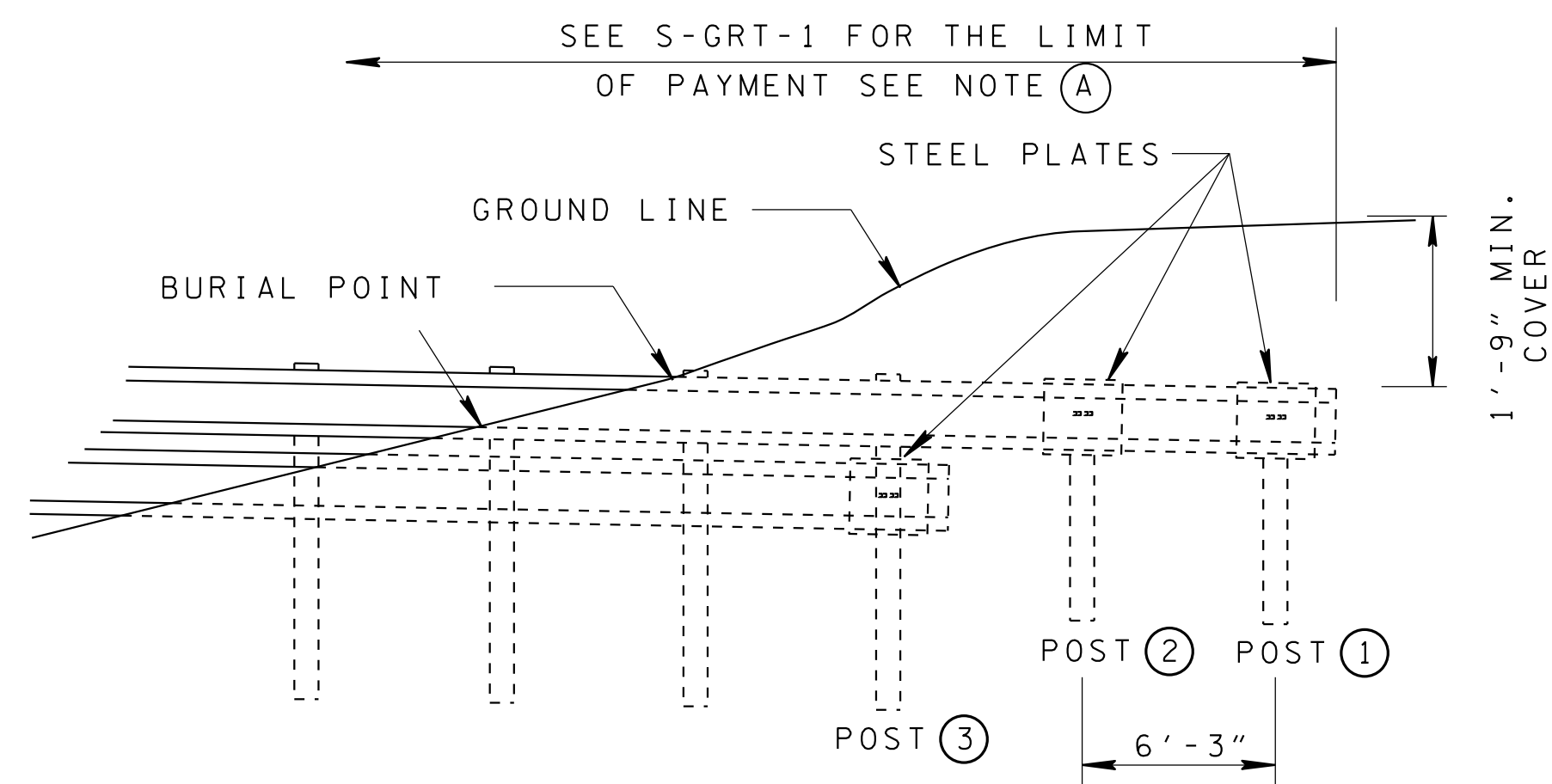


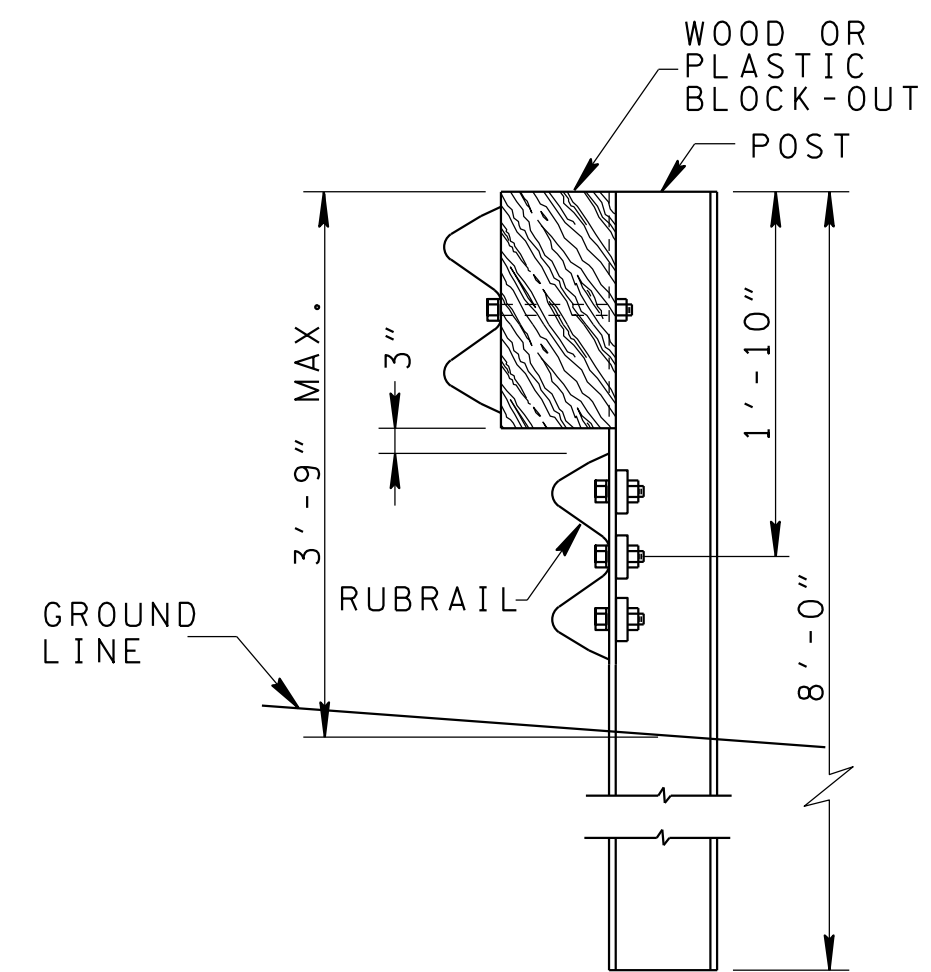
TO BE USED WITH S-GRT-1 ONLY



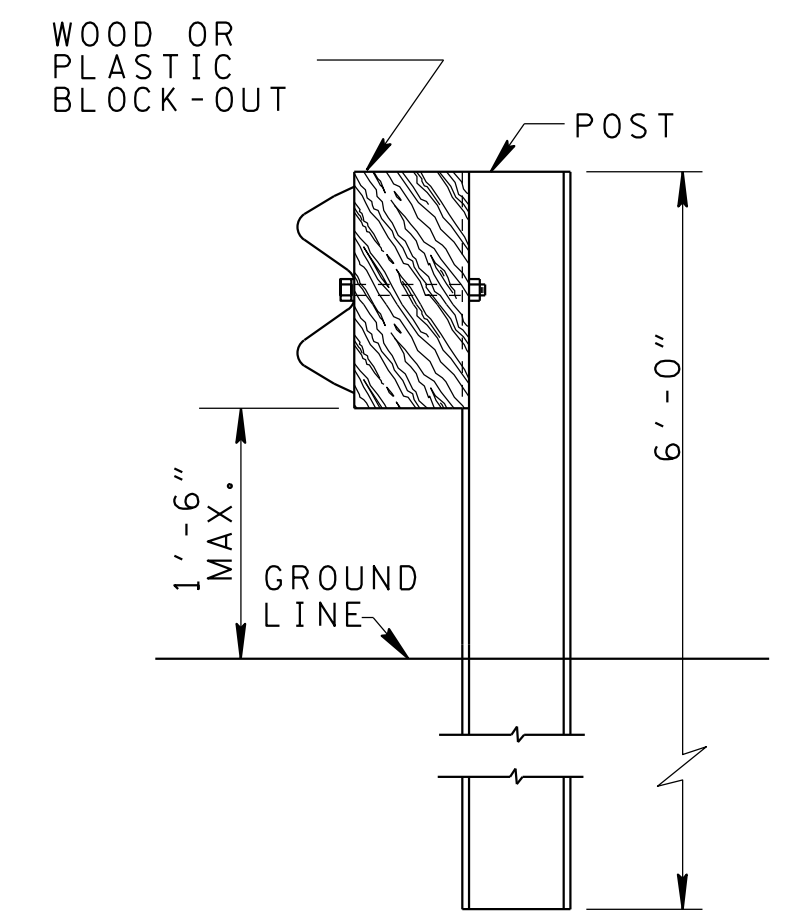
SINGLE RAIL  
ELEVATION VIEW



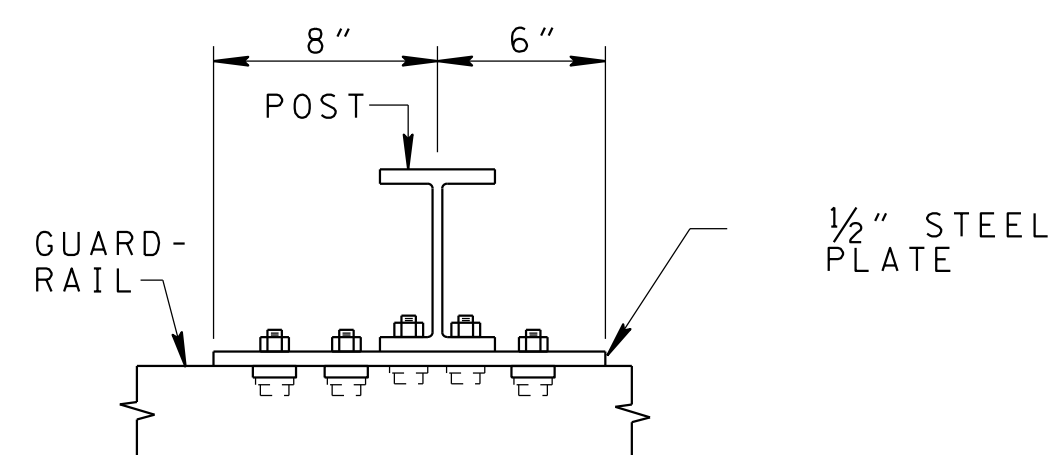
WITH RUB RAIL  
ELEVATION VIEW



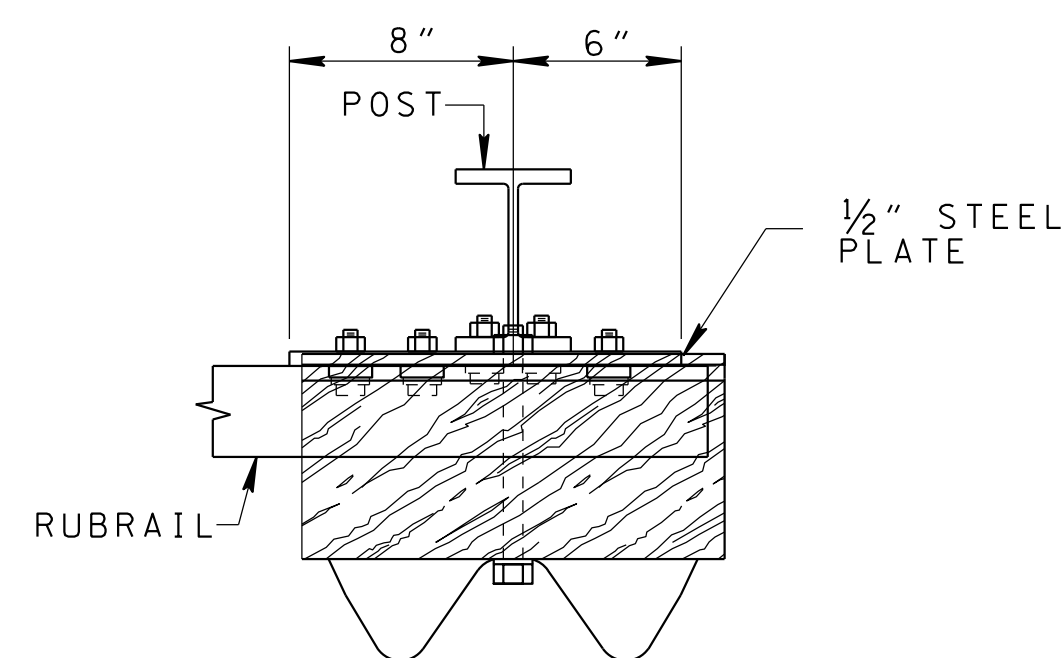
TYPICAL ELEVATION  
WITH RUBRAIL



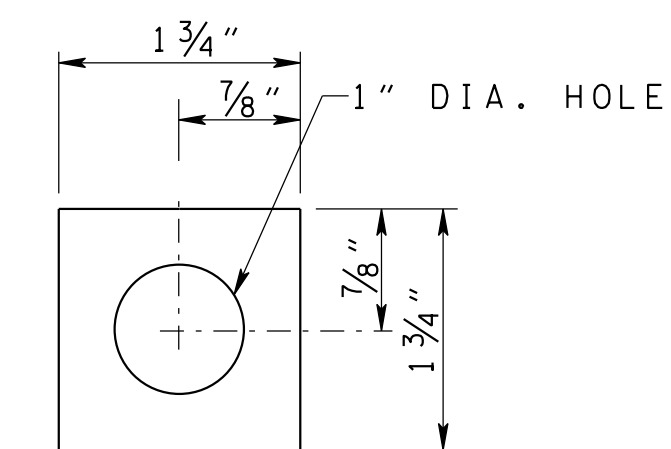
TYPICAL ELEVATION WITH  
SINGLE RAIL



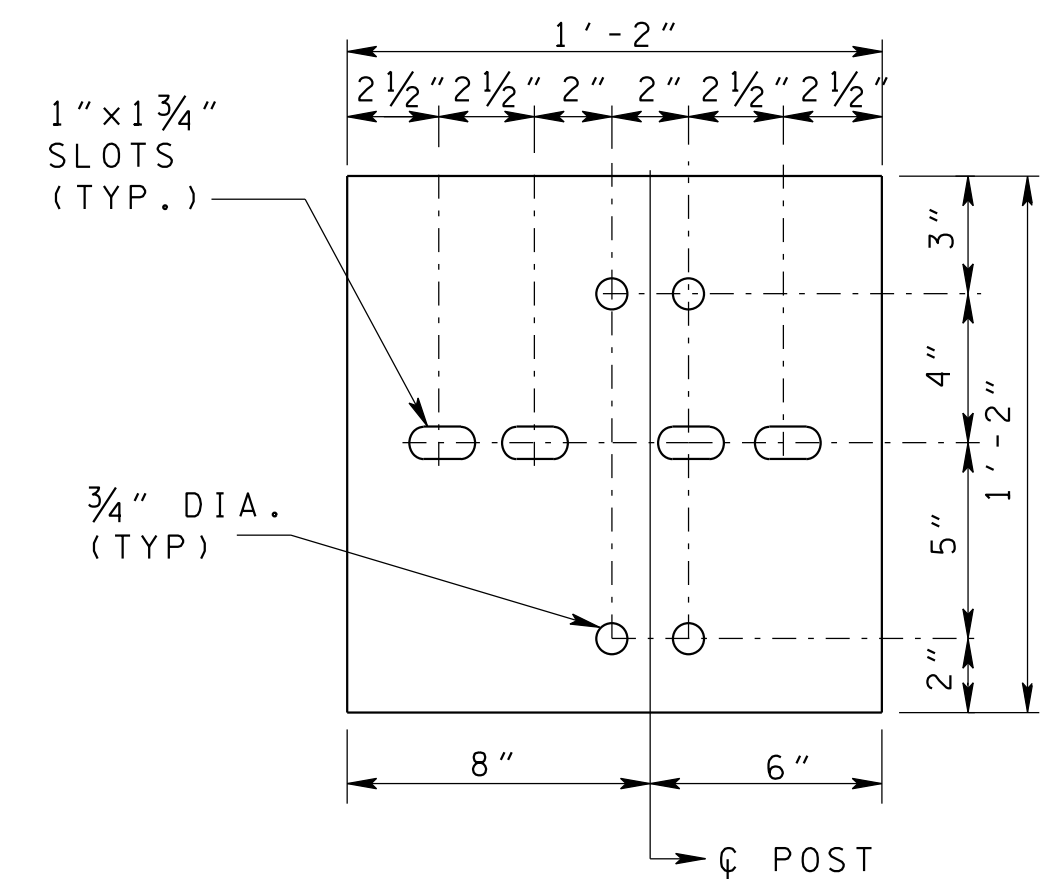
PLAN



PARTIAL PLAN



SQUARE WASHER  
NOTE: 1/4" THICK GALVANIZED STEEL



STEEL PLATE

NOTE: 1/2" THICK GALVANIZED STEEL ALL HOLES TO BE DRILLED PRIOR TO GALVANIZING.

### GENERAL NOTES

- (A) GUARDRAIL END TERMINAL SHALL BE CONSTRUCTED PER S-GRT-1.
- (B) COST OF ANCHOR TO BE INCLUDED IN THE COST OF ITEM NO. 705-04.02.
- (C) ALL POSTS SHALL BE 6 FT. FOR SINGLE RAIL INSTALLATION AND 8' FOR WITH RUB RAIL

1" DIA. HOLES IN RAIL AND THROUGH POST FLANGE FOR 3RD BOLT; ATTACHED TO STEEL PLATE WITH 5/8" DIA. HEX BOLTS, 2" LONG WITH SQUARE WASHER

BOLT PLATE TO POST WITH 5/8" DIA. HEX BOLTS 2" LONG WITH HEX NUTS

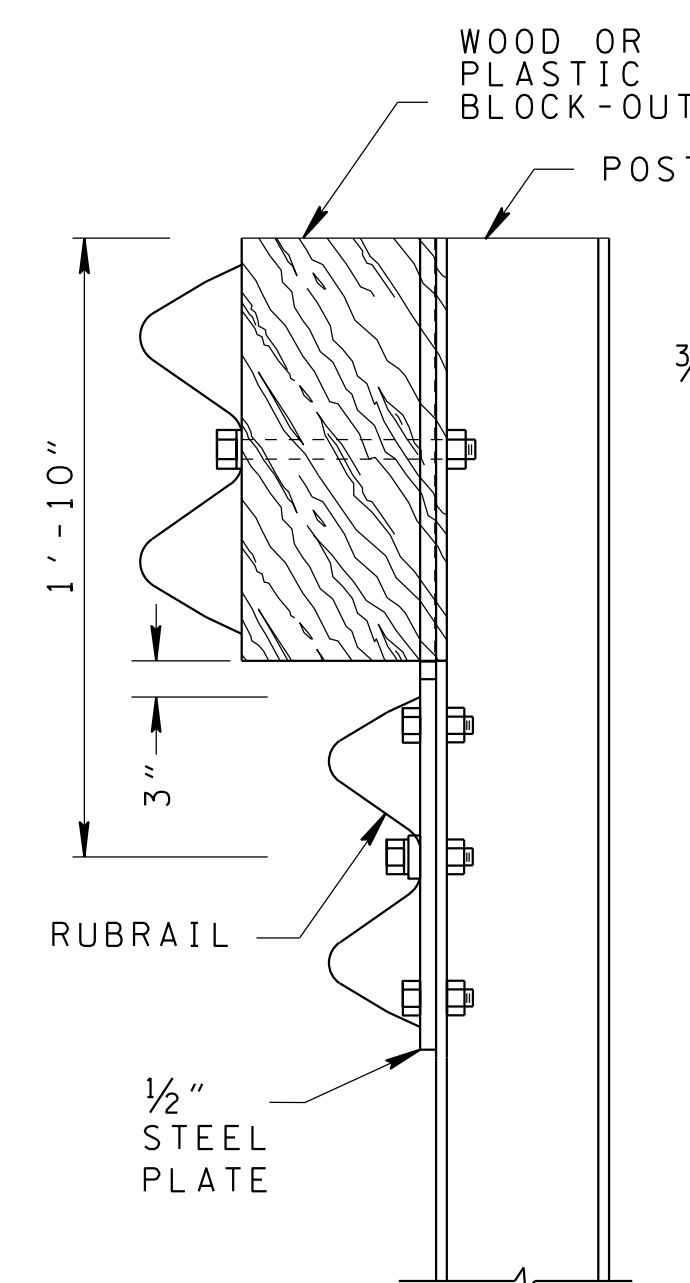
3/4" DIA. HOLE IN POST FLANGE EACH SIDE

1" DIA. HOLES IN RAIL AND THROUGH POST FLANGE; ATTACHED TO STEEL PLATE WITH 5/8" DIA. HEX BOLTS, 2" LONG WITH SQUARE WASHER

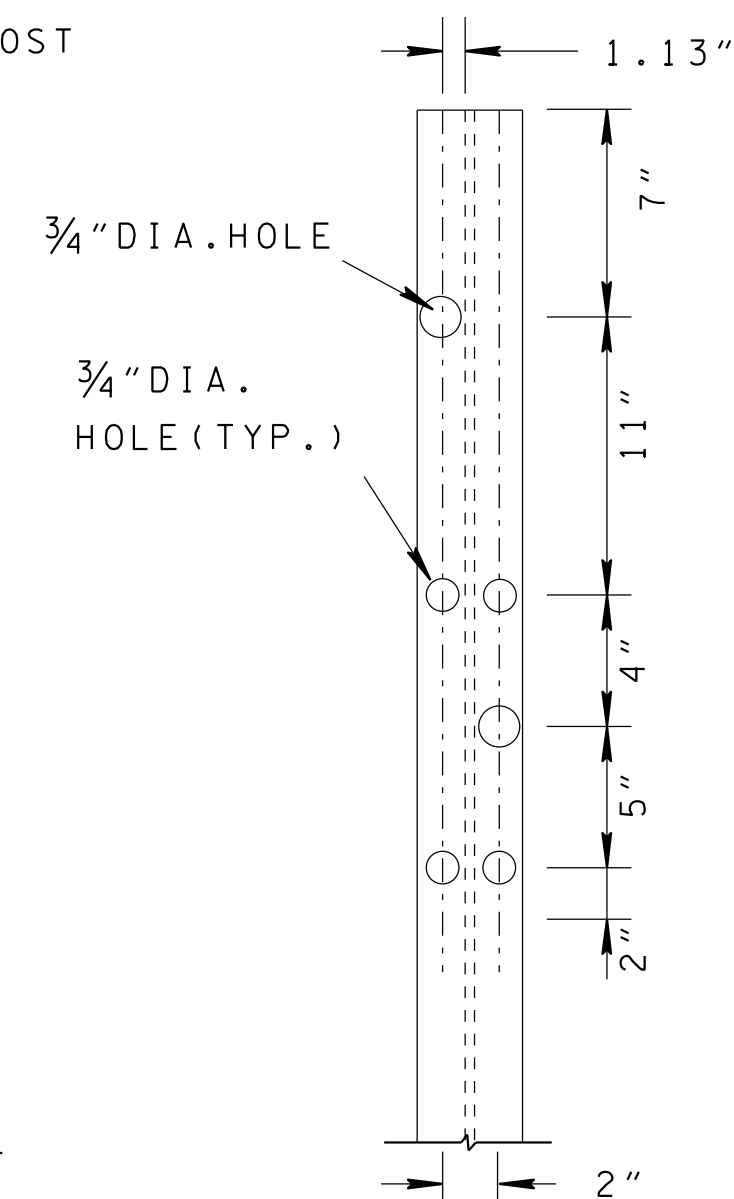
3/4" DIA. HOLE (TYP.)

1" DIA. HOLE

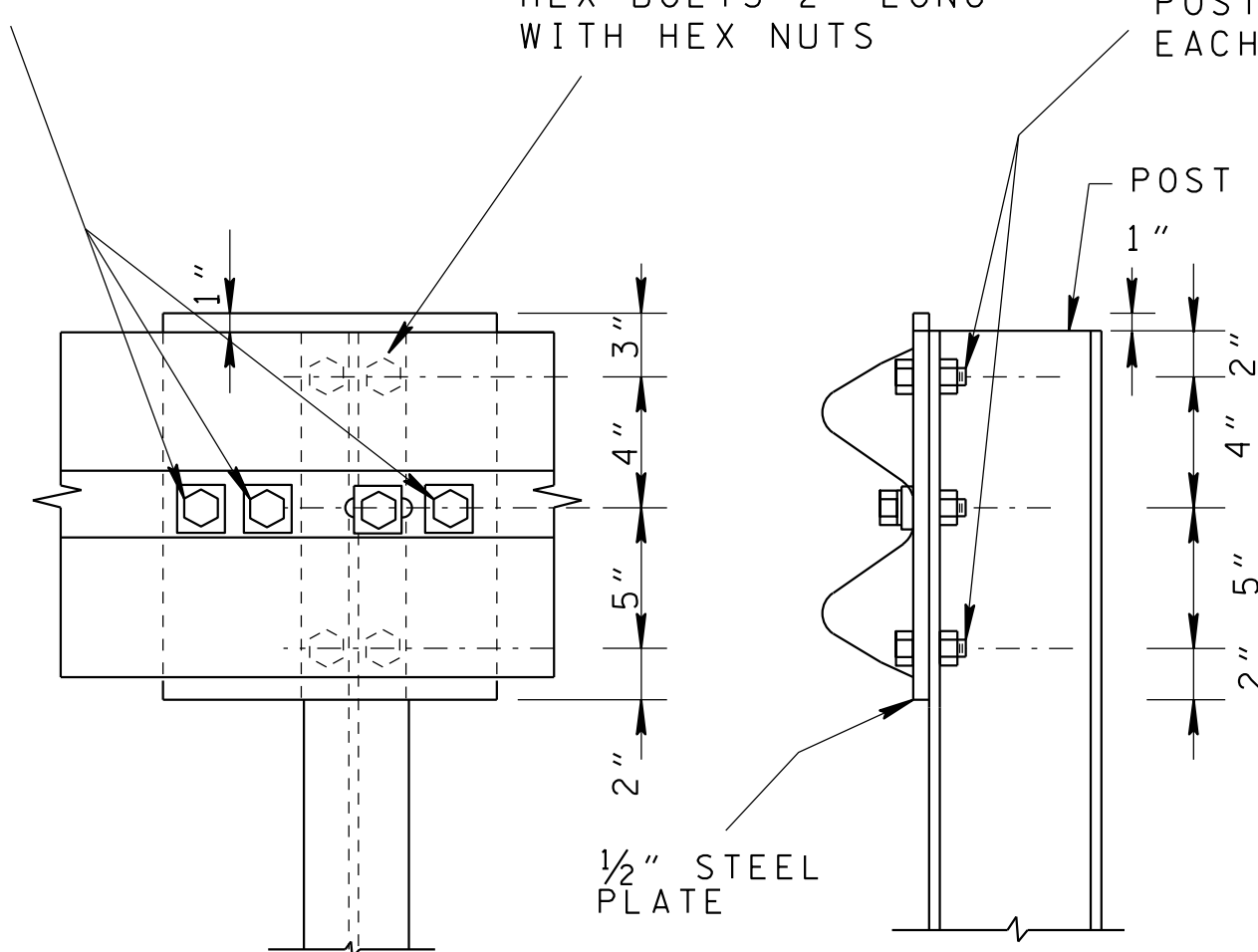
BOLT PLATE TO POST WITH 3 - 5/8" DIA. HEX BOLTS 2" LONG WITH HEX NUTS



ELEVATION



POST HOLE  
PATTERN

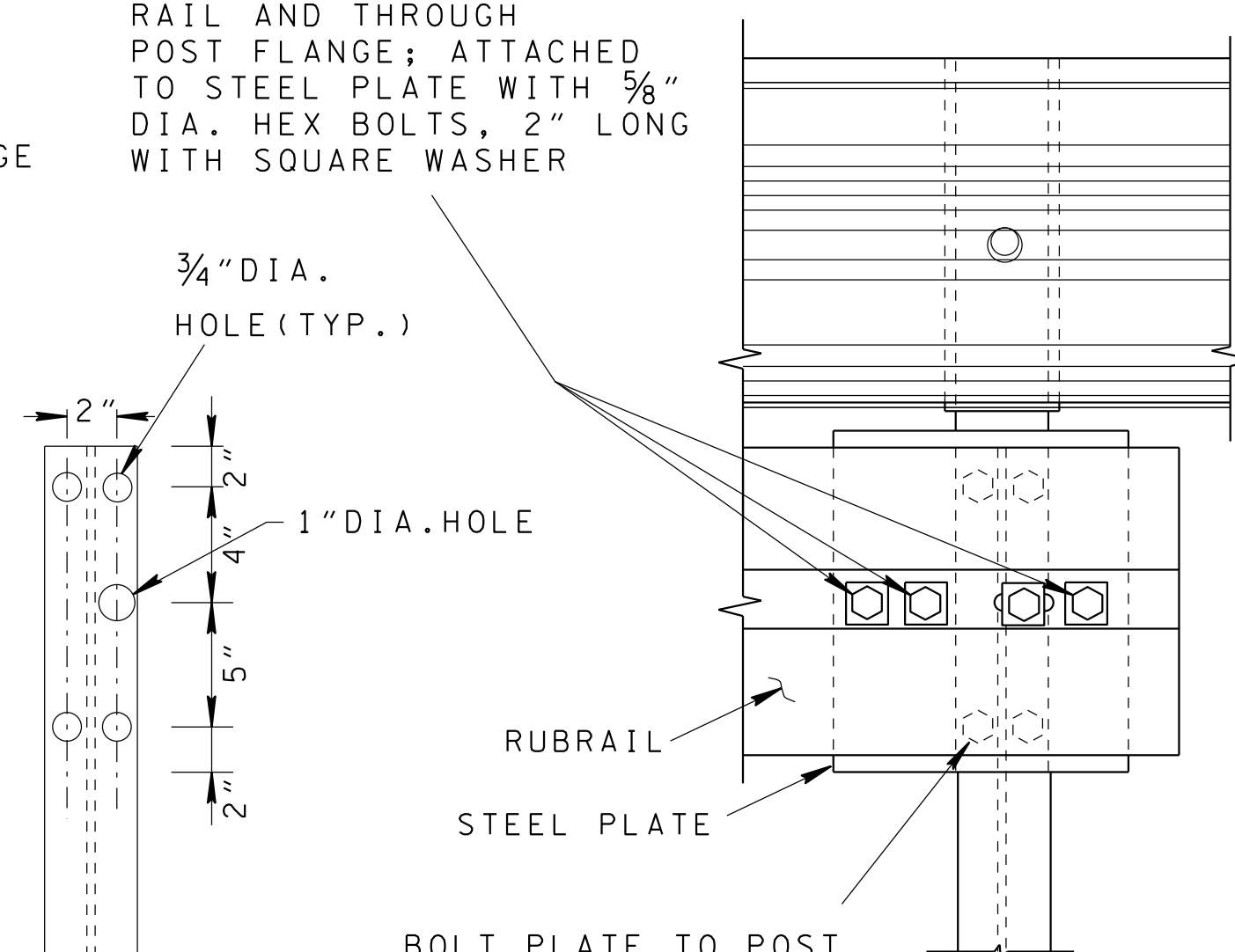


FRONT VIEW

ELEVATION

POST HOLE  
PATTERN

POST (1) & (2) ANCHOR DETAIL



FRONT VIEW

POST (3) ANCHOR DETAIL